

CLA Mission

To protect the interest of the members of this Association in the real property owned by them; to endeavor to maintain the natural level in said lake; to protect against water pollution and unhealthy conditions; to secure adequate protection against fire, theft and pilfering, to secure improved roads leading to and around the lake; to protect and promote good fishing condition in said lake; and for such other purposes as shall be beneficial to the interests of said members and the community.

**The 80's band
"Big Smile"
from Mt. Pleasant
at the
Crystal Sailing
Club Saturday
July 29th, 7:00 PM.**

**Everyone is invited to
this lakeside concert.**

**The band consists of a
great female vocalist,
local School of Rock
instructor on guitar,
CMU music instructor
on bass, experienced
drummer, and Sailor,
Phil Hertzler, on key-
boards (trying to keep
up with the others).**

**Please come out for
this evening of fun
and dancing.**

*Help us reach our
2017 membership
goal of 300.*

*Renew your mem-
bership or Join the
Crystal Lake
Association
Today!*

Crystal Lake Association

Established June 5, 1932 www.crystalonline.org

Crystal Fireworks 2017 Spectacular

To provide improved viewing and an added measure of safety the 4 Lake Association barges carrying the fireworks show were anchored individually about 300 feet apart this year. As a result viewers were treat-

The fireworks went off flawlessly and the audience went home happy and satisfied. We want to call attention to Mike Manning and Steve Meinhardt for the many hours of work they put in both before and on the day of the show. Also, we want to thank



Thanks to Larry Johnston for capturing the beauty of the 2017 Crystal Lake Fireworks

ed to a better view overall and the show was launched from multiple platforms simultaneously adding to the excitement of the show.

Bill's Fireworks for providing a superior quality show this year.

Marine Patrol Escorts Fireworks Barges



Special thanks to the Montcalm County Sheriff and the Marine Patrol for their help.

Board of Directors

2017-2018

Board President

Steve Meinhardt
steve@casair.net

Vice President

Bonnie Kanitz
kanitzb@msn.com

Treasurer

Kim Morgan

Secretary

Roxy Eaton

Newsletter Editor

Bill R. Hepburn

Directors:

Fred Engle

Joe Kopchick

Mike Manning

Nancy Ayres

Tim Dorch

Tim Dorch Elected to CLA



Tim & Beth Dorch recently relocated to Crystal from the East Coast where they retired from careers in Federal law enforcement. He is a native of Chicago. Beth's roots are in Ionia. They met during college years and

have two sons. According to Dorch, when lake cottage living evolved from a dream to a reality family connections tipped the scale toward Crystal Lake, Montcalm County, a Michigan gem. Giving back to the community has been a personal priority for the Dorch's in retirement so when Tim was nominated for the CLA Board of Directors he said he both welcomed and appreciated the opportunity.

-Upcoming Events-

Dance at the Sailing Club

July 29 7PM

Run The Lake

August 5 8AM

Art Fest and Car Show Crystal Park

August 12

Crystal Lake

Golf Cart Moon Light Ride

August 19 10PM

CLA Membership

What you get:

- **Fireworks**
- **Water Quality**
- **Sheriff's Patrol**
- **Goose Roundup**
- **Community Support**
- **Winterfest**
- **Township Report**
- **Lake Association Directory**

Membership is easy Go to our website crystalonline.org and sign up, or mail in your application or call us and we will pick up your application. Dues are only \$45 per year. Please support the Crystal lake.

Ad Hoc Dock Committee Established by CLA

A number of Crystal Cottage owners enjoyed cruising across the lake with their families and friends and tying up at the public dock. They went for burgers and beer at the Wet Spot, Ice Cream and snacks at Ike's, lunch at the Uptown Bar, bait or gear at Wet Willies, breakfast at Lake Street Station, a movie at the theater, to pick up some cash at the bank, to mail a letter at the Post Office or browse through the many wares at the Candle Cottage. You could even take the boat to church. It was an easy convenient way to support our local businesses.

However, since the Township board decided several years ago to no longer install the public dock between the public beach and the park there is no public tie up on the east shore of the lake. At the July 9th Annual Meeting of the CLA the attendees were polled regarding their thoughts on replacing the public

dock to make it convenient to patronize our local businesses. A majority of the attendees indicated that they would like to see a public dock made available to Crystal Lake boaters.

The CLA board has formed a committee to develop a plan and bring back recommendations to the board on the feasibility and cost as well as how the project might be funded. One suggestion was to sell sponsor planks with the donors name engraved on the dock.

The committee is Chaired by Bill Hepburn and members include Diane Rydahl, Cheryl McNeil, Carol Wiles and Beth Dorch.

Community input is welcome, so please contact the Lake Association or one of the committee members if you have ideas to share or would like to join the committee.

Township News

by Kim Morgan

After a beautiful 4th of July with quite the crowd around the lake, we now move toward the dog days of summer. We can look forward to the Art Fest and car show held in Crystal Park August 12 with a bake sale, book sale and chicken BBQ. August 19th will be a golf cart moon light ride around the lake at 10pm along with plenty of boating and swimming before our summer comes to an end.

With summer well underway and many friends and families sharing summer activities here at the lake, I'd like to remind everyone who uses the recycling center at the Community Center and those who haven't recycled but might like some information on what you can recycle and what needs to go in your garbage bin.

Items accepted include plastic tubs, bottles and jugs, metal cans, foil, empty shopping bags, glass bottles and jars, newspapers, magazines, catalogs, mail, office paper, phonebooks, paperboard boxes and cardboard boxes flattened.

Items not acceptable to recycle include Styrofoam cups, containers, trays, packaging foam, pizza boxes, pet food bags, books, light bulbs, sharp or medical waste, batteries, gas, oil, antifreeze or any hazardous substance containers, all electronic equipment, propane tanks, pots, pans, silverware or dishes, plastic caps and lids, paint cans, tied bags or any bag with recyclable materials in them.

You can bring your recyclables in a trash bag but

please empty these items out of the bags as it is a totally automated system and a full trash bag with acceptable recyclables inside will be pushed off the conveyor to be put with normal trash items.

Did you know that out by the sewer ponds on Miner Rd, there is a spot for Crystal Township residents to bring grass clippings, leaves, limbs up to 1" in diameter as well as shrubs. There is also a pile of dirt out there that you can use to put in your flower or veggie gardens. All that is asked of our residents is that leaves be removed from trash bags and that nothing else be deposited there in order to keep this service available to our residents.

In the fall, once the leaves really start falling from the trees, our Township DPW worker, Roger Gooding Sr, will be out there happily picking up leaves only, which you can rake close to the road on your property. Please just remember, this service is for leaves only as sticks and twigs can damage the leaf vac.

The newest update on the efforts to adopt a trash and blight ordinance is in the works with a committee formed which will consist of 9 members. There should be a date soon for our first meeting to start working towards this goal.

Environmental Considerations When Operating a PWC

When operating your personal watercraft, consider the effect you may have on the environment.

- **Make sure that the water you operate in is at least 24 inches deep.**

Riding in shallow water can cause bottom sediments or aquatic vegetation to be sucked into the pump, damaging your PWC and the environment.

Avoid causing erosion by operating at slow speed and by not creating a wake when operating near shore or in narrow streams or rivers.

- **Do not dock or beach your PWC in reeds and grasses.** This could damage fragile environments.
- **Take extra care when fueling your PWC in or near the water.** Oil and gasoline spills are very detrimental to the aquatic environment. Fuel on land if possible.
- **Never use your PWC to disturb, chase, or harass wildlife.**

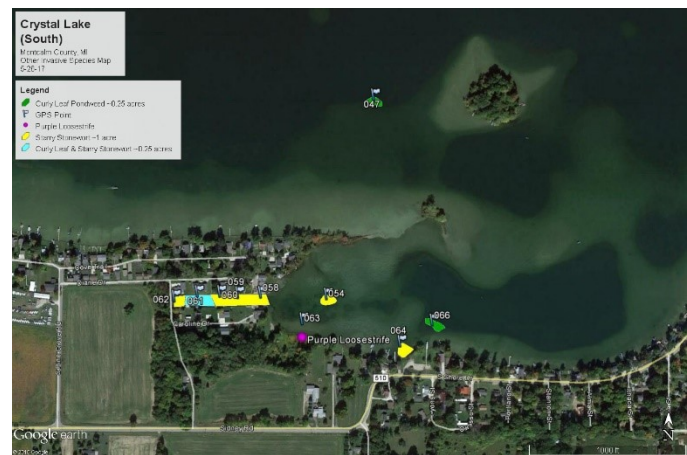


It Takes a Whole Community to Keep Crystal Lake Free

Free? Not! So far this year, 259 CLA members have contributed \$7,380 towards our fight to keep Crystal Lake winning the war against aquatic invasive species (AIS). The war we are waging is expensive, \$13,000. If all the people who enjoyed this lake contributed, it would be wonderful! Currently, we are approximately \$5500 short to cover costs.



Restorative Lake Sciences Plant Mapping Crystal Lake on May 26, 2017. Before treatment and after treatment bottom mapping \$3000. PLM Lake Management treated the lake early June, \$9041. Plus, DNR \$800 permit to treat lake and CLMP fees brings the total to \$13000. Results, outstanding! Our lake's Cooperative Lakes Monitoring Program (CLMP) status has increased from mesotrophic to oligotrophic, meaning a young healthy lake!



Map (left) of Eurasian Milfoil locations for treatment. Map (Rt) locations for Starry Stonewort and others.

It seems like a lot of money to stay on top of AIS from overtaking our lake. And, it is! Approximately 14.5 acres required treatment. In a neighboring county, a lake the same size as ours has to treat over 300 acres as they let it go over the past four years. Figure out that cost! If anyone would like to contribute towards this program, you can either donate funds thru the CLA Website, www.crystalonline.org via Paypal or Credit Card. You do not have to be a member to donate. Or send a check to CLA, PO Box 307, Crystal, MI 48818. Any donations will be very much appreciated! Better yet, join the CLA to support Water Quality and many other worthwhile programs!!

Personal Watercraft Courtesy When Near Other Vessels

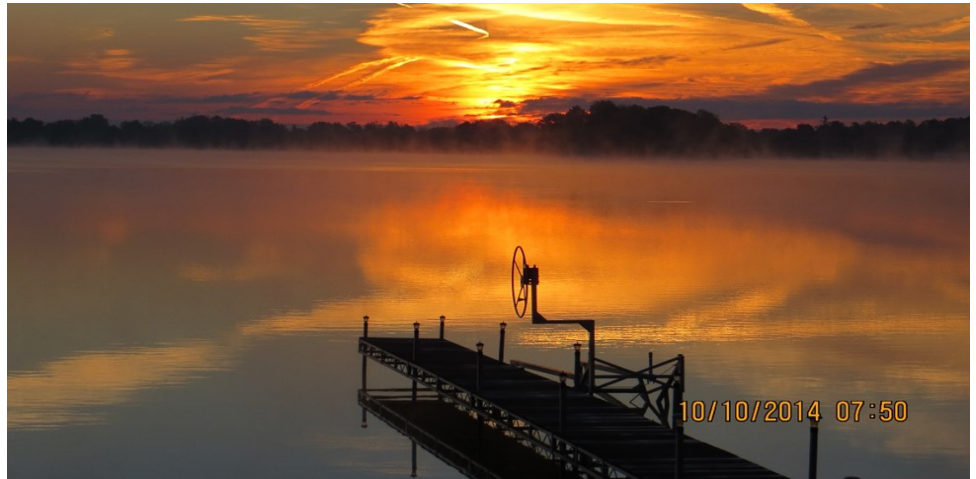
Jumping the wake of a passing boat, or riding too close to another PWC or boat, creates risks and is restricted or even prohibited in some states. The vessel making the wake may block the PWC operator's view of oncoming traffic and also conceal the PWC operator from approaching vessels. Excessive noise from PWCs often makes them unwelcome with other vessel operators and people on shore. Be a courteous PWC operator.

- Vary your operating area, and do not keep repeating the same maneuver.
- Avoid congregating with other PWC operators near shore, causing annoying noise levels.
- Avoid making excessive noise near residential and camping areas, particularly early in the morning.
- Avoid maneuvers that lift the engine exhaust out of the water because that increases noise levels.

Water Quality Fundraiser Planned for 2018

Parade of Cottages

By now you know we need to raise funds for invasive plant treatment of the lake. So, an idea has taken root to have a **Parade of Cottages** fundraiser. Much like a parade of homes! A committee has been formed to organize this for 2018. Committee volunteers are Chris Wilkes, Carol Wiles, Nancy Ayres and Bonnie Kanitz. What can **YOU** do to help raise funds for the lake? Volunteer to show your cottage! Vintage or new, big or small, fancy or plain, the CLA wants your cottage for four hours on one day in 2018. Will you do it? Can you help us? Please call Bonnie at 989-436-3377 to sign your cottage up!



You can help keep Crystal Lake Beautiful and Weed Free

Goose Roundup 2017

By Fred Engle

After a few false starts, we were able to round up 58 geese on Saturday, June 24th. The original plan was to corral the geese on the 9th of June, but at that time we were told 85% of the adult geese had not molted yet. So that date was changed to the 23rd. The morning of the 23rd there was a lighting storm so we moved it up to Saturday the 24th. We made it three days before the DNR deadline of the 27th!

We had a great turnout to help with the roundup. Nine people were on the ground looking for geese to shoo them into the water. We walked between cottages to make sure we had all the geese. There were sixteen pontoons to corral the geese and to guide them over to the old boat landing.

We had a new company working with us this year, Goose Busters. They are located in Holly, Michigan. Because it was a Saturday, the geese had to be taken back to Holly and put in a pen until Monday morning. On Mon-

day they were relocated to the Rogers City area where they were met by a DNR agent to release them and make sure they were not injured.

I would like to thank everyone who helped with the roundup. We get great participation from the members. If you have not done this before and would like to help, email me and I will put you on the list for next year. We usually do the round up the second or third Friday of June. My email address is fredengle67@gmail.com



CLA Membership Application and Donation Form

Name _____

Mailing Address _____

Mailing City, State & Zip _____

Crystal Address _____

Contact Phone _____ Email _____

CHECK HERE IF YOU WOULD LIKE FUTURE CORRESPONDENCE VIA EMAIL _____

WE NOW ACCEPT PAYPAL, CREDIT CARDS or ACH. Pay to: Crystal Lake Association	2017 ANNUAL DUES (\$45.00)	\$ _____
	Fireworks Donation (2017 Target \$9000)	\$ _____
	Water Quality Fund (2017 Target \$11,000)	\$ _____
	Legal Defense Fund	\$ _____
	Total	\$ _____

Mail To:
Crystal Lake Association (CLA)
PO Box 307, Crystal MI 48818

Renew online at:
<http://www.crystalonline.org/renewonline.htm>

Crystal Lake Association
P.O. Box 307
Crystal, MI 48818

**LIKE! Crystal Lake Association
On Facebook Let's be Friends**